


Presentation Topics

- A. Regional Water Planning Overview
- B. Description of the South Central Texas (Region L) Regional Water Planning Group
- C. Highlights of the 2026 Region L Initially Prepared Plan (IPP)
- D. How to Submit Comments on the IPP

**8**

TOPIC

A

Regional Water Planning Overview

Black & Veatch

9

Regional Water Planning in Texas

- First initiated under Senate Bill 1 of 75th Legislature in 1997 in response to:

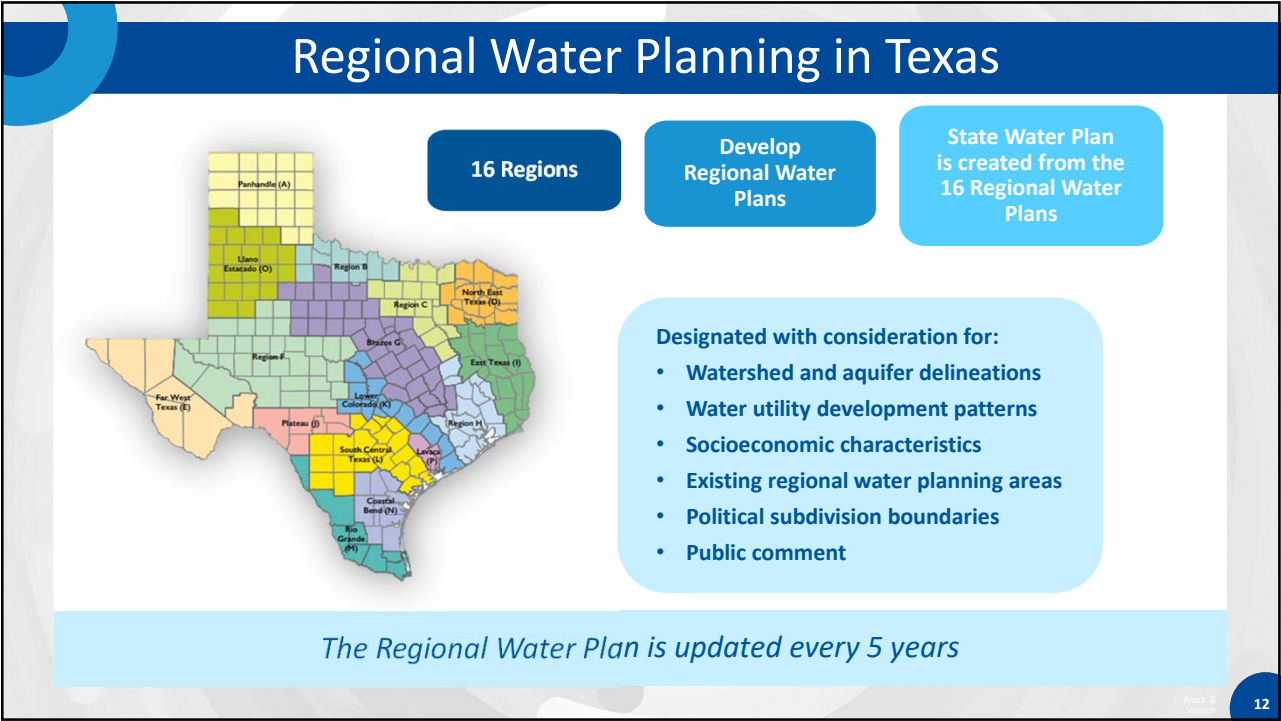
Drought

Population Growth


Limits of Existing Water Supplies
- Administered by Texas Water Development Board (TWDB)
- “Bottom-Up” approach to water planning
- First Regional Water Plan submitted in 2001, with updates every subsequent five years

Black & Veatch

10



Regional Water Planning in Texas



Regional Water Planning Group Members are volunteers with various levels of experience in the water industry, representing:

- Public
- Counties
- Municipalities
- Industries
- Agriculture
- Environment
- Small Business
- Power Generation
- River Authorities
- Water Districts
- Water Utilities
- Groundwater Management Area

Local political subdivision acts as an administrative agent for the planning group


Assisted by a team of technical consultants

13

Regional Water Planning in Texas

"The regional water plan shall provide for the orderly development, management, and conservation of water resources and preparation for and response to drought conditions..."

- Texas Administrative Code



14




Regional Water Planning in Texas


Study and consider:

- Population and demand growth;
- Drought of Record water supply projections; and
- Impacts of water management strategies
 - Financial cost
 - Environmental, agricultural, and socioeconomic impacts

"The regional water plan shall provide for the orderly development, management, and conservation of water resources and preparation for and response to drought conditions..."

- Texas Administrative Code





15

Regional Water Planning in Texas




Study and consider:


Population and demand growth;

Drought of Record water supply projections; and

Impacts of water management strategies

- Financial cost
- Environmental, agricultural, and socioeconomic impacts





A Drought of Record is

"the period of time when historical records indicate that natural hydrological conditions would have provided the least amount of water supply."

-TAC Title 31, Part 10, Chapter 357, Subchapter A, Rule 357.10

16

B

Black & Veatch

17

South Central Texas Region (Region L)

The map displays the South Central Texas Region, with counties color-coded and labeled. A specific sub-region is highlighted in dark blue and labeled with letters A through M. This highlighted area includes counties such as Bexar, Comal, Guadalupe, and others. Surrounding counties are shown in various shades of blue, green, and yellow. A compass rose and a scale bar (0 to 50 miles) are located in the bottom right corner.

18

South Central Texas Regional Water Planning Group (SCTRWPG)

The SCTRWPG has 32 Voting Members, representing the following interest categories:

- Public
 - Counties
 - Municipalities
 - Industries
 - Agriculture
 - Environment
- Small Business
 - Electric Generating Utilities
 - River Authorities
 - Water Districts
 - Water Utilities
 - Groundwater Management Areas

The SCTRWPG has several non-voting members that represent certain State Agencies or are liaisons from other regional water planning groups (RWPGs)

The San Antonio River Authority is the administrative agent for Region L.



Black & Veatch

19

SCTRWPG Membership for the 6th Planning Cycle (2021 to Present)

Officers

(2024 to Present)
Curt Campbell, Chair
Humberto Ramos, Vice Chair
Gary Middleton, Secretary
Jason Ammerman, At-Large
Steve Metzler, At-Large

(2021 to 2023)
Tim Andruss, Chair
Adam Yablonski Vice Chair
Gary Middleton, Secretary
Humberto Ramos, At-Large
Glenn Lord, At-Large

Voting Members

- Jason Ammerman
 - Tim Andruss
 - Ryan Bayle
 - Amber Beard
 - Darrell Brownlow
 - John Byrum
 - Curt Campbell
 - Rey Chavez
- Will Conley
 - Debbie Farmer
 - Charlie Flatten
 - Steve Graham
 - Terrell Graham
 - Vic Hilderbran
 - Thomas Jungman
 - Ryan Kelso
 - Paul Kite
- Russell Labus
 - Glenn Lord
 - Gary Middleton
 - Scooter Mangold
 - Andrew McBride
 - Steve Metzler
 - Daniel Meyer
 - Travis Pruski
- Robert Puente
 - Vanessa Puig-Williams
 - Humberto Ramos
 - Weldon Riggs
 - Roland Ruiz
 - Diane Savage
 - Darren Simmons
 - Mitchell Sowards
 - Jonathan Stinson
- Heather Sumpter
 - Thomas Taggart
 - Ian Taylor
 - Aarin Teague
 - Dianne Wassenich
 - Andra Wisian
 - Adam Yablonski
 - Dan Yoxall

Non-voting Members

- Carl Crull
 - Iliana Delgado
 - Ronald Fieseler
- Michele Foss
 - Tony Franklin
- Tom Hegemier
 - Marty Kelly
 - Jami McCool
- Elizabeth McCoy
 - Don McGhee
 - Rusty Ray
- Carly Rotzler
 - Charles Wiedenfeld

Funding and Administration
Texas Water Development Board

Administration
San Antonio River Authority

Black & Veatch

20

Region L Guiding Principles

The Region L Plan Enhancement Process established 11 SCTRWP Guiding Principles to improve and clarify the principles that guide SCTRWP decisions.

1. Appropriateness and adequacy of how demand and need are determined

2. Role of Regional Water Planning Groups in influencing population growth and land use

3. Conflicts of interests with respect to planning group members

4. The role of the planning group in influencing water development plans of water suppliers

5. The role of the planning group in influencing permitting entities

6. The adequacy of evaluating the plan's effects on freshwater inflows to San Antonio Bay, and the adequacy of environmental assessments of individual water management strategies (WMSs)
7. Minimum Standards for WMSs

8. Recommended WMSs

9. Management Supply

10. The role of reuse within the Regional Water Plan

11. Identifying special studies or evaluations deemed important to enhance the 2021 plan, the identification of outside funding sources, and the extent to which innovative strategies should be used.

Available online at www.RegionLTexas.org

Public Participation

Public involvement is integral to the regional water planning process

The public is invited to participate in:

- Public hearings for the Initially Prepared Plan (IPP) and other important milestones
- Quarterly meetings of the SCTRWP
- Workgroups



Public Meetings

All meetings are held in accordance with the Open Meetings Act and Public Information Act

- All meetings have public notice posted on Region L website (www.RegionLTexas.org)
- Meeting materials are posted online
- Meetings are open to the public
- Meetings are hybrid with in-person and virtual components
- Public comments are accepted at beginning and closing of meetings

South Central Texas (Region L) Regional Water Planning Group

• 18 Meetings:
Feb. 2021, May 2021, Aug. 2021, Nov. 2021, Feb. 2022, May 2022, Aug. 2022, Nov. 2022, Feb. 2023, May 2023, Aug. 2023, Nov. 2023, Feb. 2024, May 2024, Aug. 2024, Nov. 2024, Jan. 2025, Feb. 2025

Groundwater Availabilities

• 1 meeting:
Apr. 2024

Policy and Legislative Recommendations

• 7 Meetings:
Apr. 2024; Jun. 2024; Jul. 2024; Aug. 2024; Sep. 2024; Dec. 2024; Jan. 2025

Population and Water Demands

• 11 Meetings:
Apr. 2022; Nov. 2022; Dec. 2022 (3 meetings); Jan. 2023; Mar. 2023; Apr. 2023; May 2023; Jun. 2023; Jul. 2023

Rural Community Outreach

• 4 Meetings:
Jul. 2023; Apr. 2024; Jun. 2024; Jul. 2024

Staff Workgroup

• 18 Meetings:
Jan. 2021, Apr. 2021, Jul. 2021, Oct. 2021, Jan. 2022, Apr. 2022, Jul. 2022, Oct. 2022, Jan. 2023, Apr. 2023, Jul. 2023, Oct. 2023, Jan. 2024, Apr. 2024, Jul. 2024, Oct. 2024, Jan. 2025, Feb. 2025

59 Meetings Since 2021

BLACK & VEATCH

Black & Veatch23

Upcoming Region L Meetings

JULY
2

Virtual Informational Session on IPP

AUGUST
28

3rd Quarter SCTRWPG Meeting

OCTOBER
2

4th Quarter SCTRWPG Meeting

All meetings are open to the public. More information is available at www.RegionLTexas.org

Black & Veatch

24

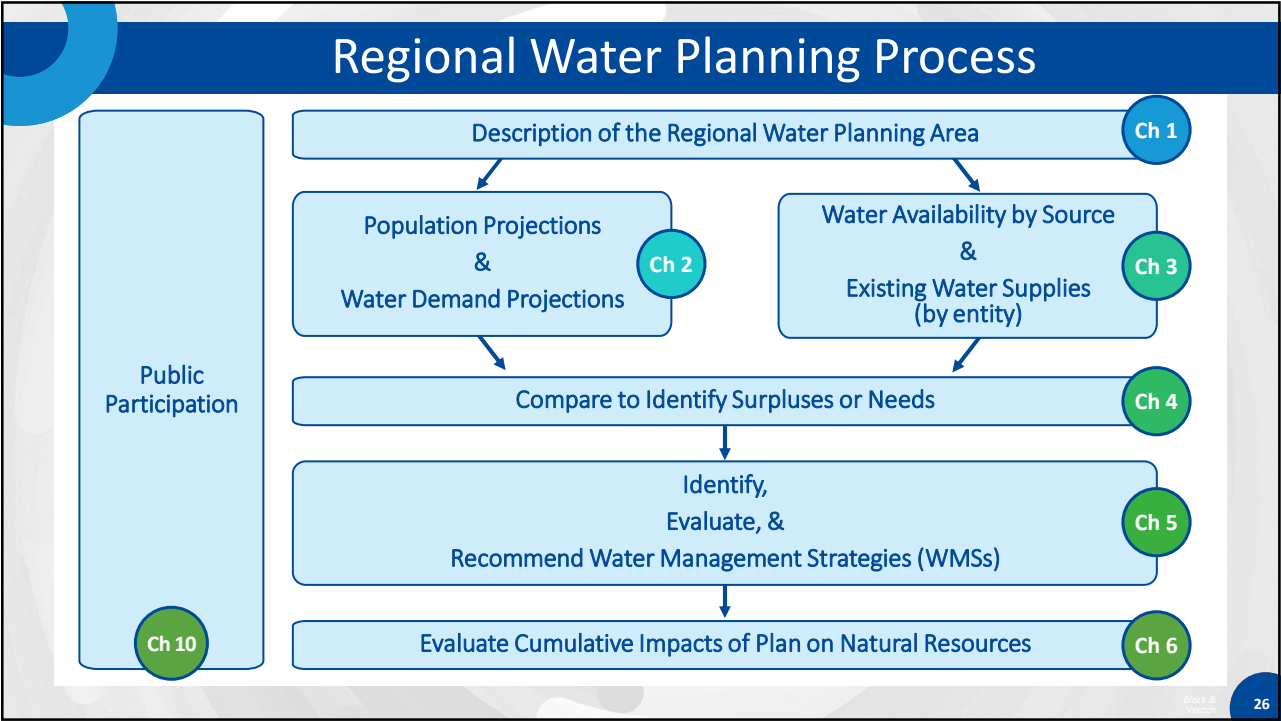
TOPIC

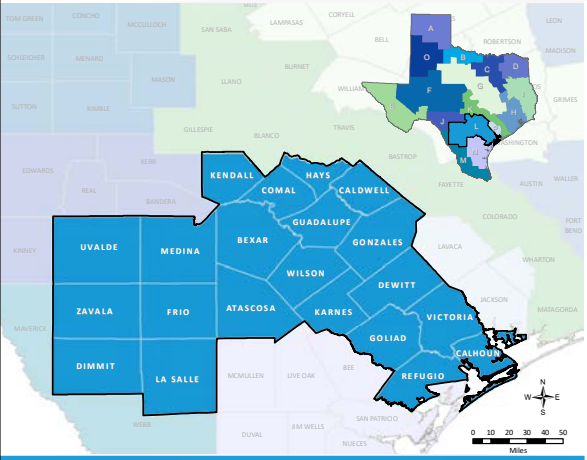
C

Highlights of the 2026 Region L Initially Prepared Plan (IPP)

Black & Veatch

25





CHAPTER 1

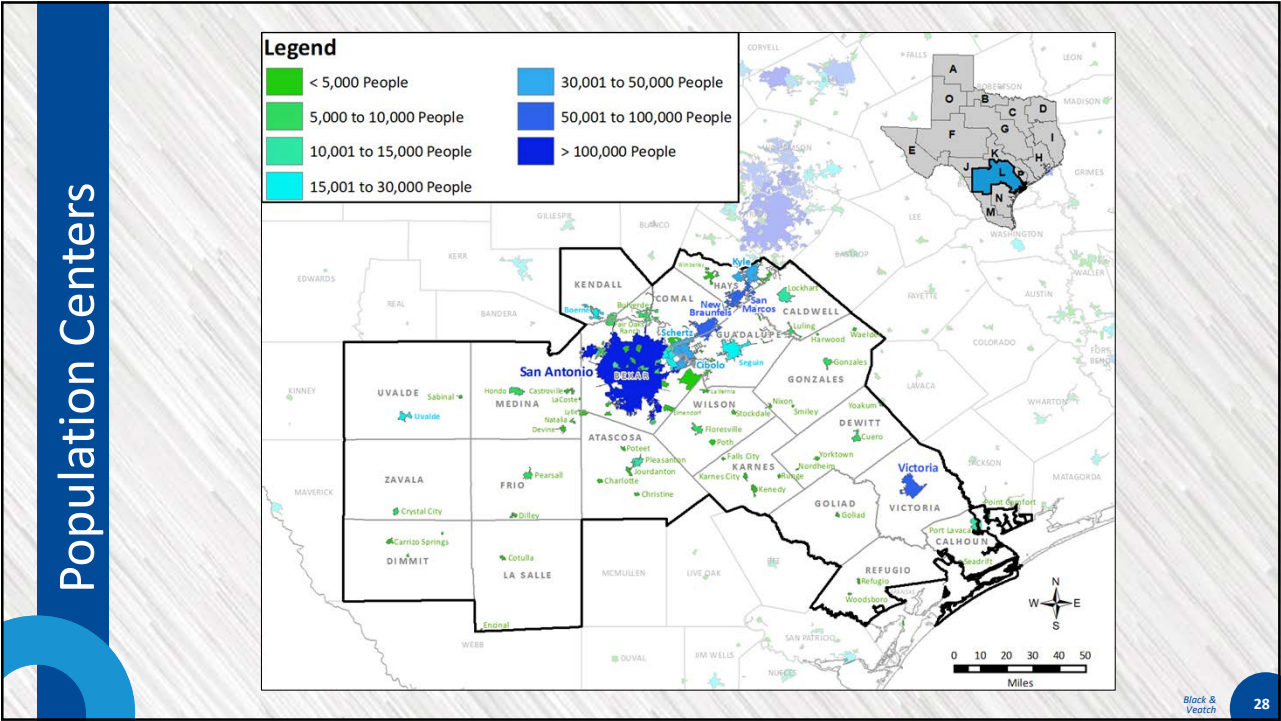
Provides an overview of the South Central Texas Regional Water Planning Area (SCTRWPA), including:

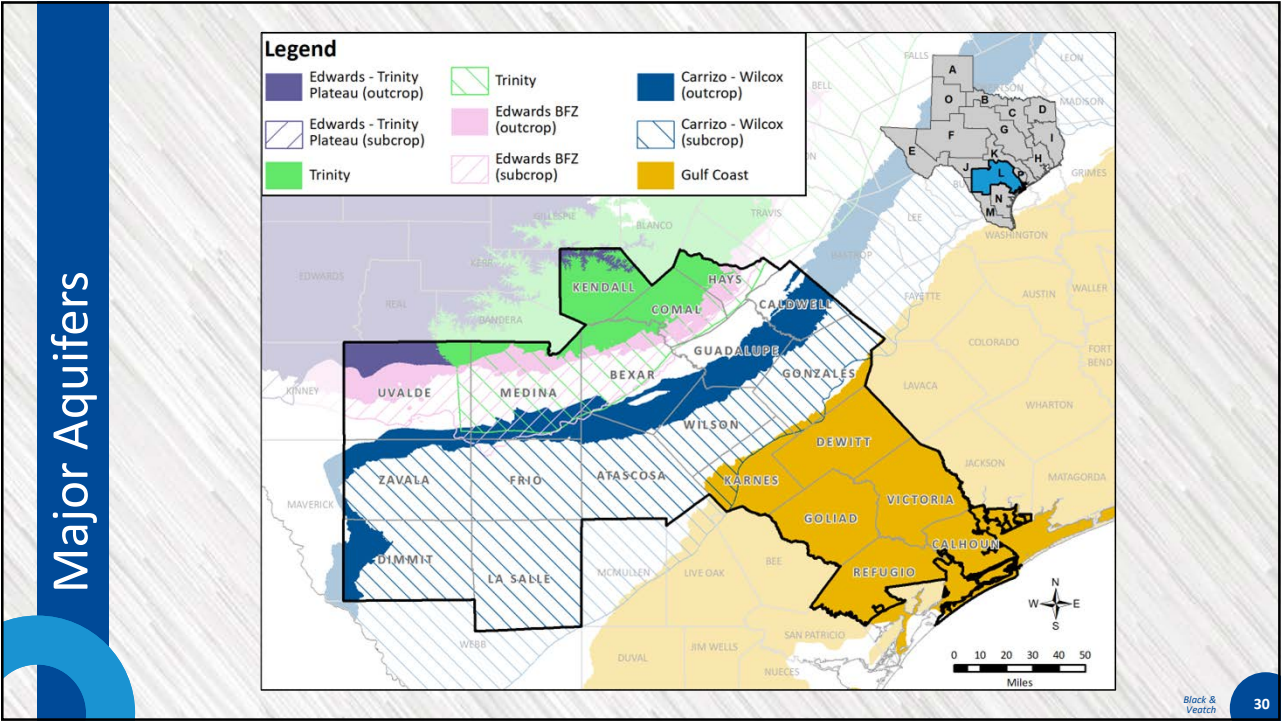
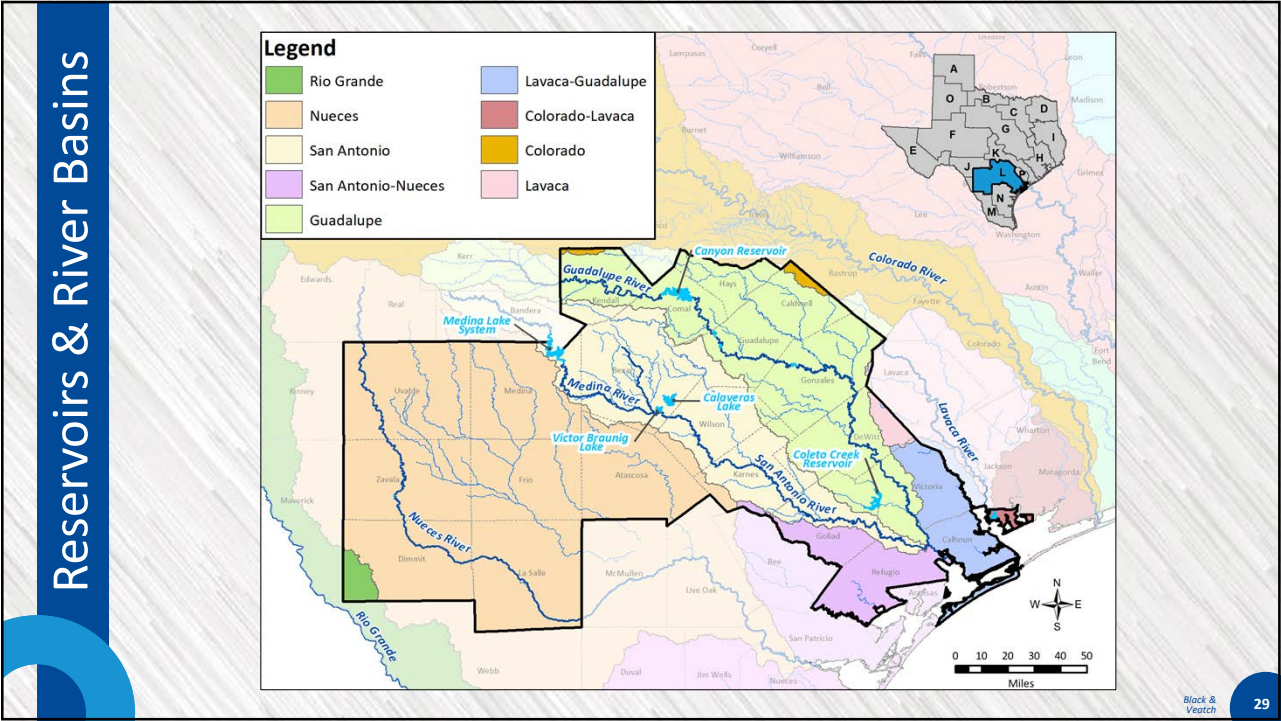
- Climate
- Water Resources
- Natural Resources
- Agricultural Resources
- Economy
- Current Water Use and Major Demand Centers
- Water Loss Audits

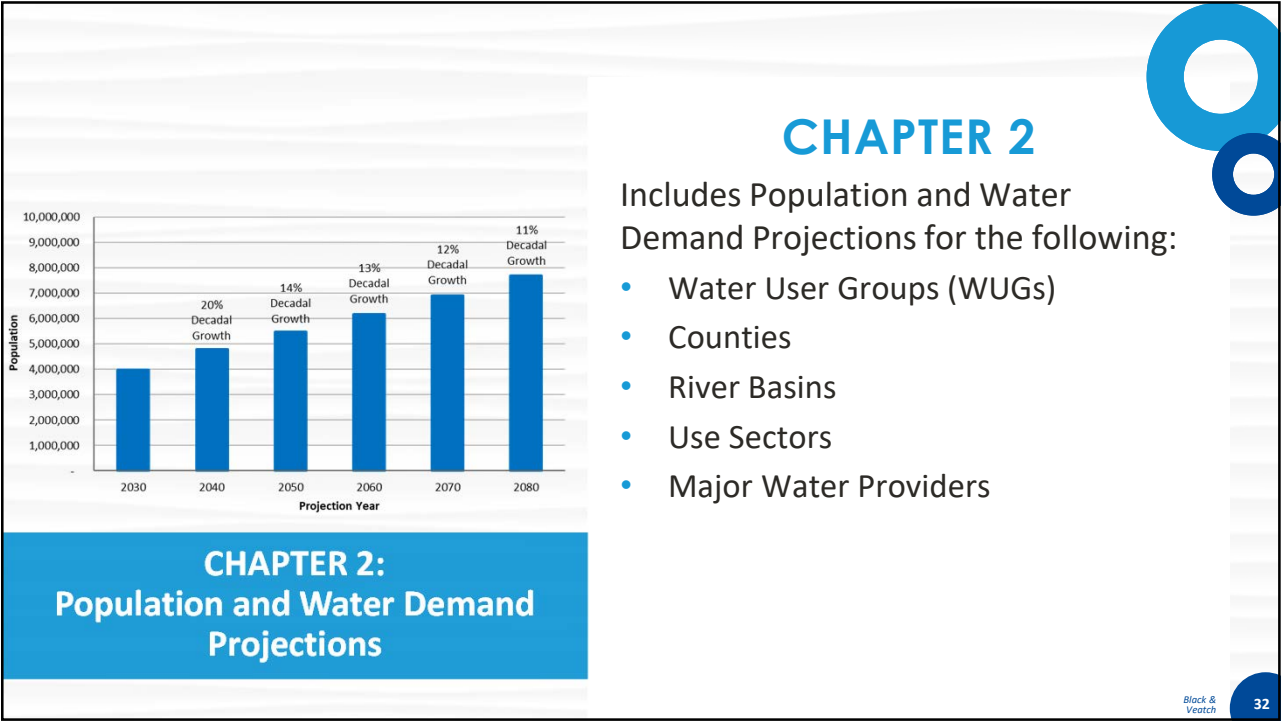
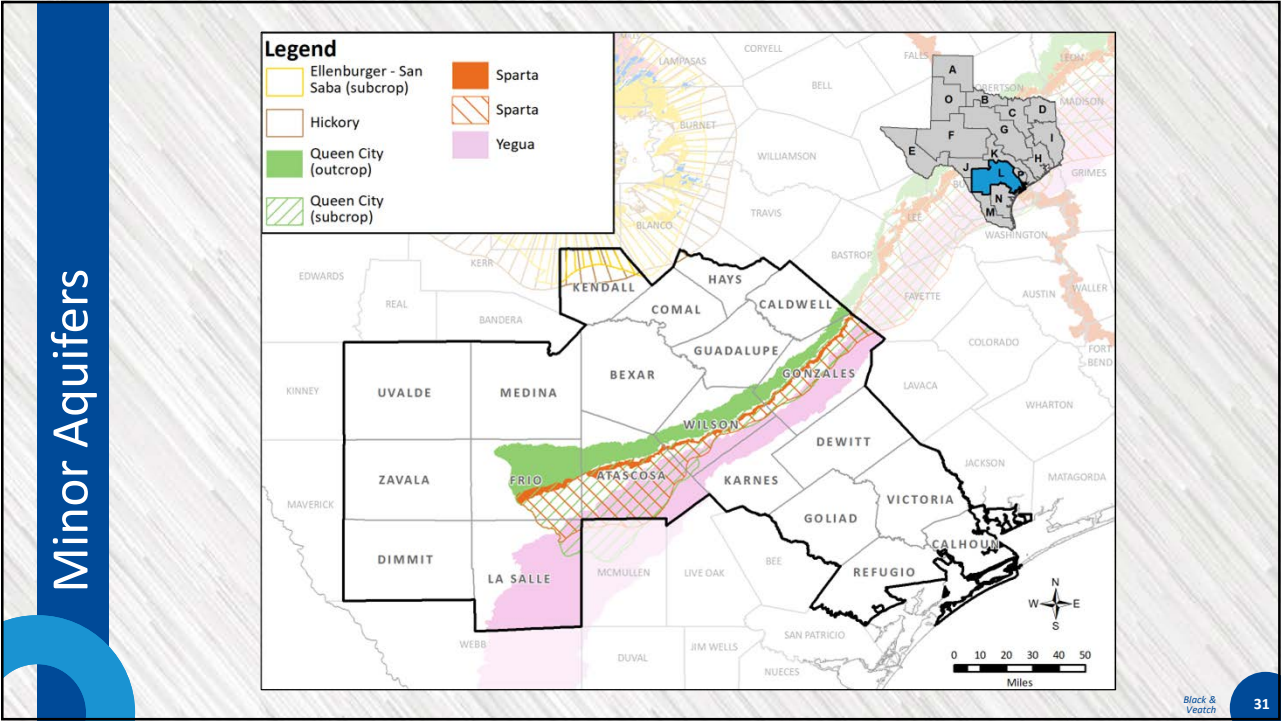
CHAPTER 1: Description of the Regional Water Planning Area

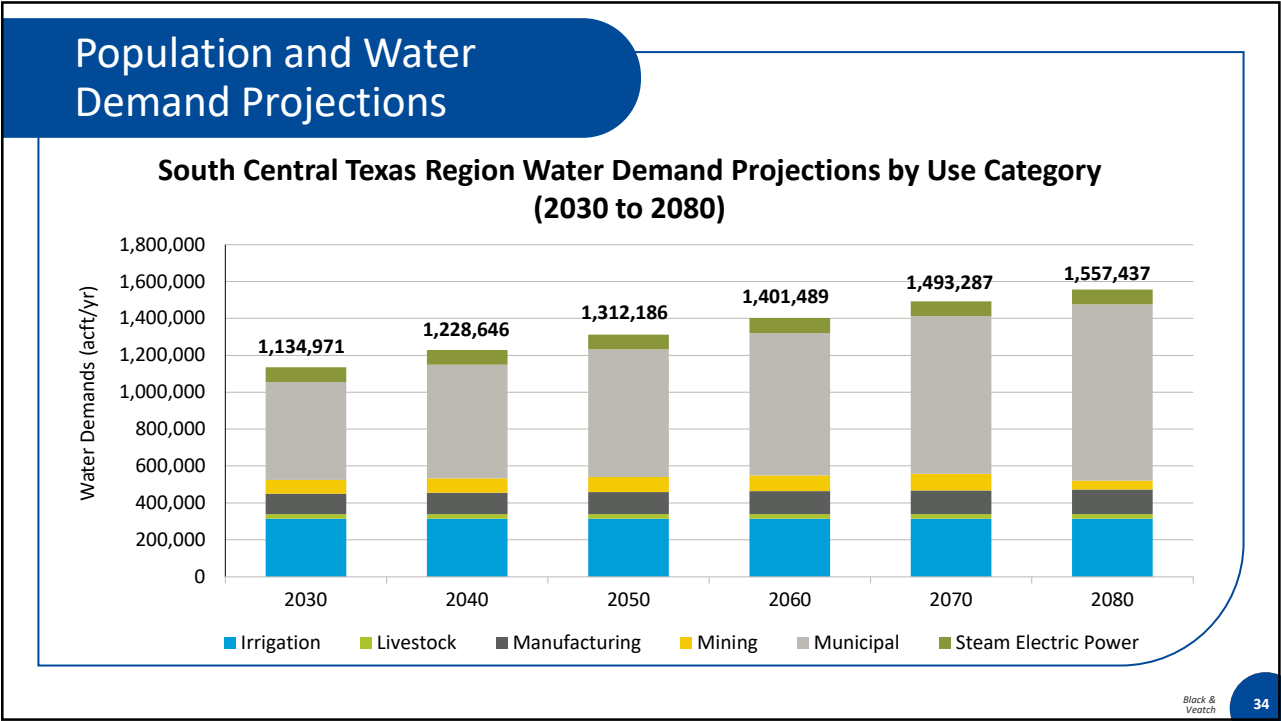
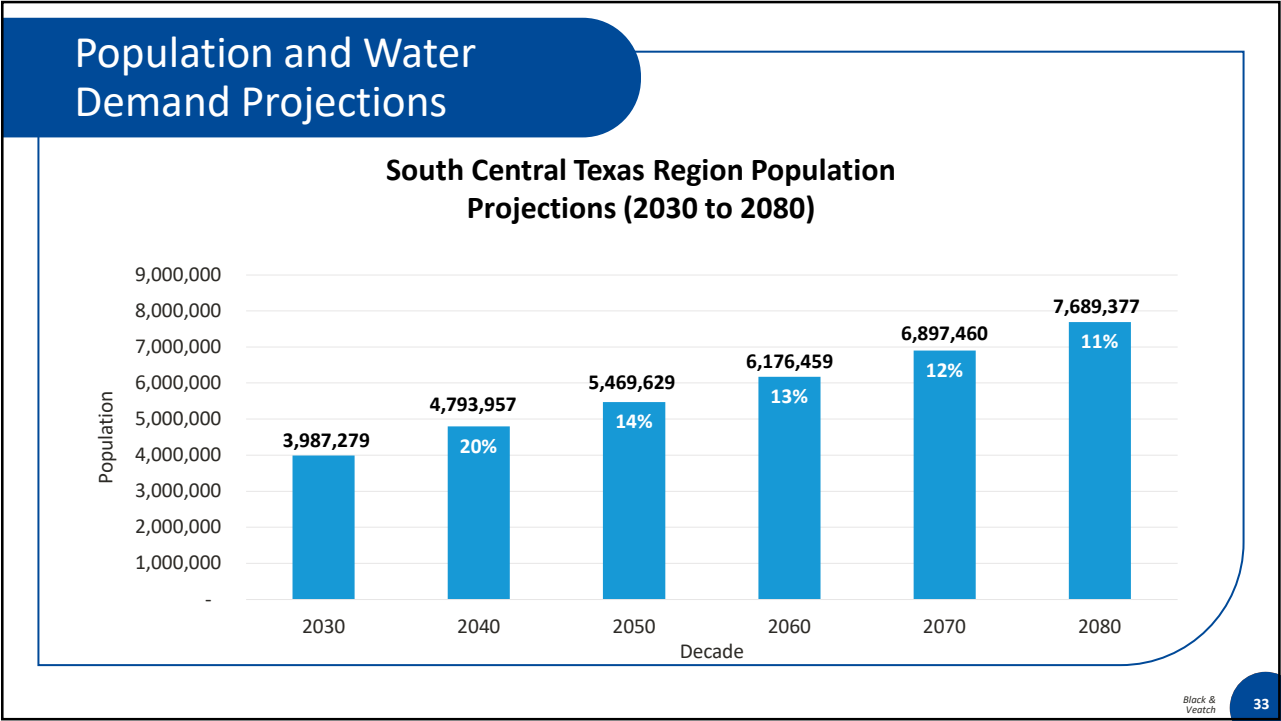
Black & Veatch


27











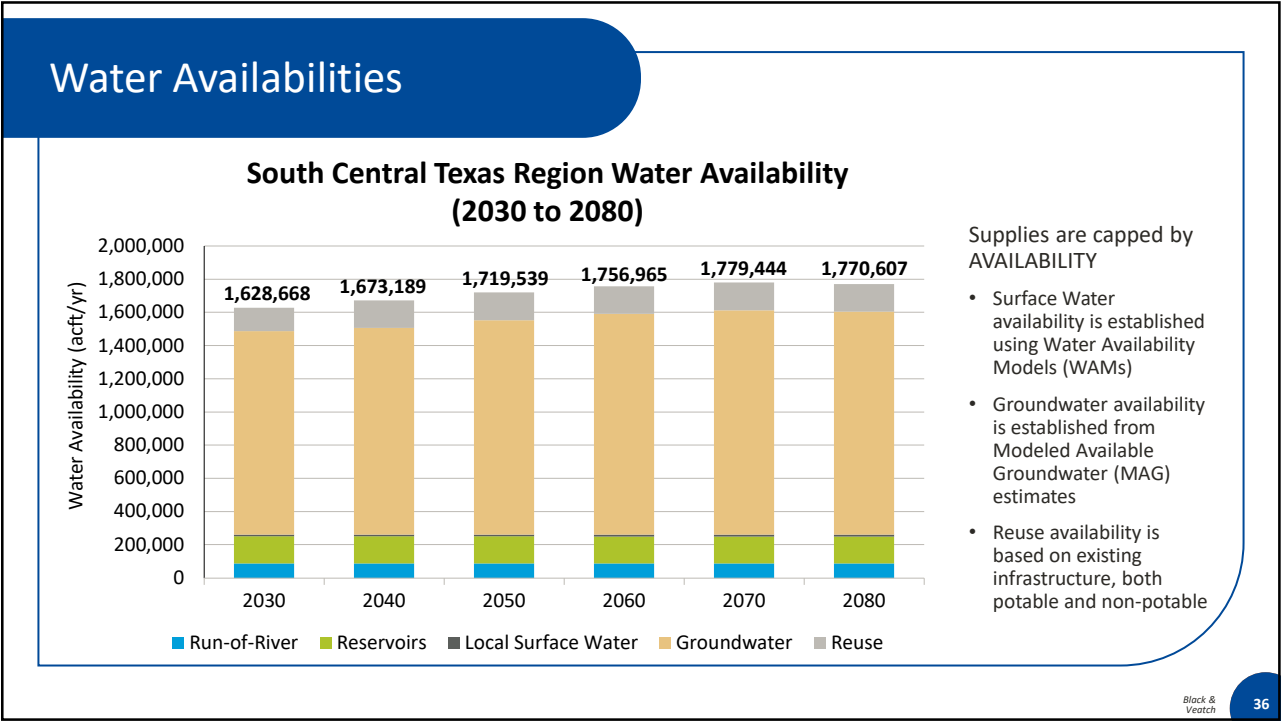
CHAPTER 3:
Water Availability and Existing Water Supplies


CHAPTER 3

Describes water sources and provides estimates of drought-year water availabilities and existing water supplies for:

- Surface Water
 - Run-of-River
 - Reservoirs
 - Local Surface Water
- Groundwater
- Reuse

Black & Veatch
35





CHAPTER 4:
Identification of Water Needs

CHAPTER 4

Summarizes the evaluation and results of the water needs (shortages) analysis and secondary needs analysis for WUGs and major water providers

Supplies

—

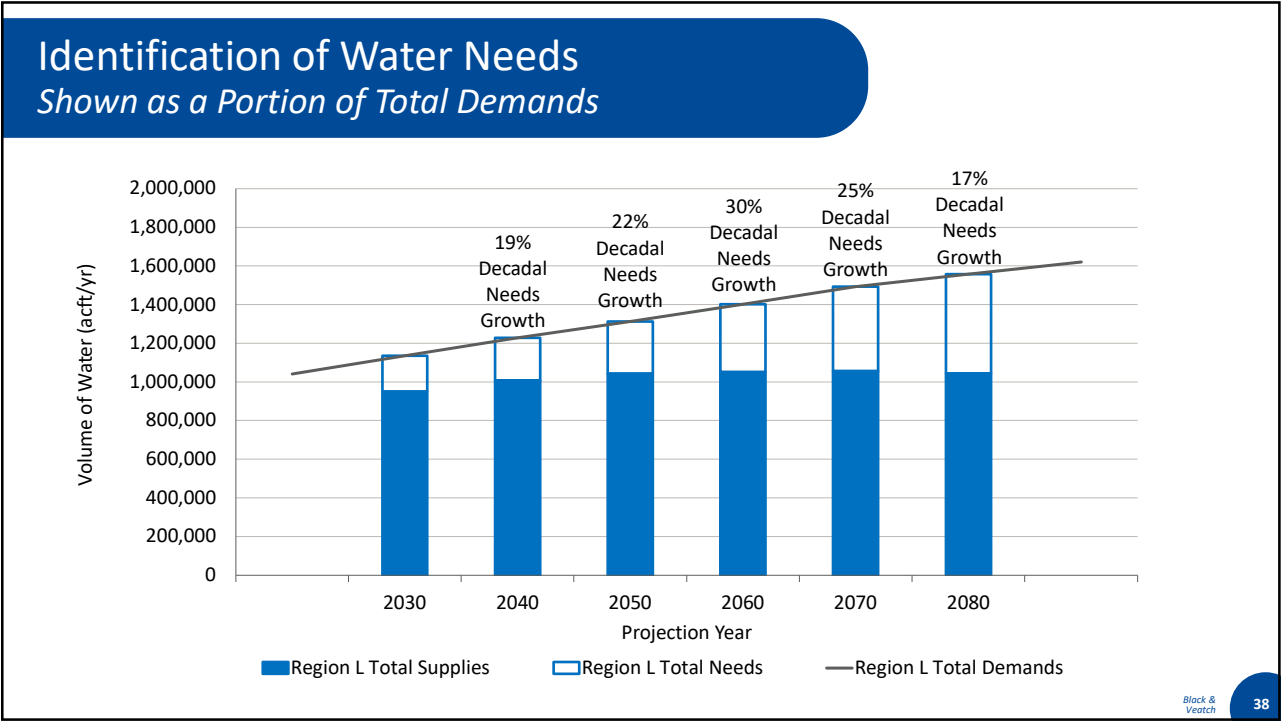
Demands

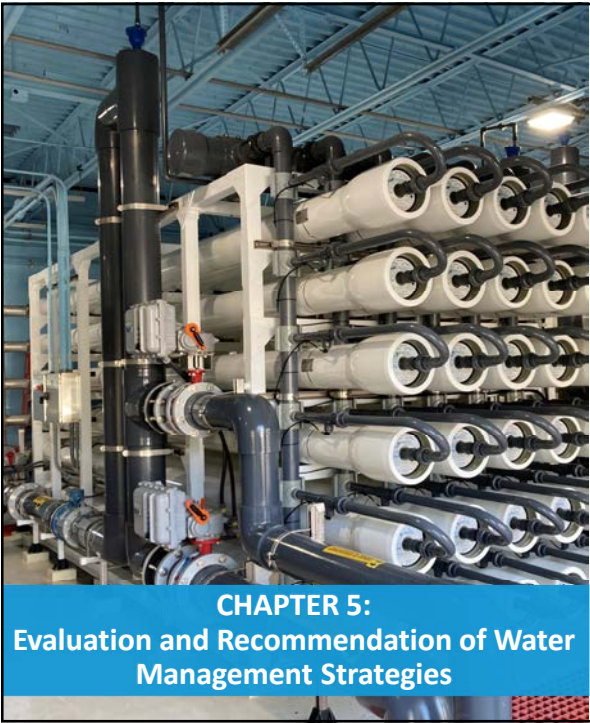
=

Surplus (Needs)

Black & Veatch

37





CHAPTER 5

Includes information on water management strategies (WMSs).

Chapter 5 is organized into three subchapters:

Subchapter 5.1

Potentially Feasible Water Management Strategies

Subchapter 5.2

Water Management Strategy Evaluations

Subchapter 5.3

Water Conservation Information and Recommendations

CHAPTER 5:
Evaluation and Recommendation of Water Management Strategies

Black & Veatch

39

Water Management Strategies (WMSs) Evaluated

1. Advanced Water Conservation

2. Non-municipal Water Conservation

3. Drought Management

4. Edwards Transfers

5. Fresh Groundwater Development

6. Brackish Groundwater Development

7. Groundwater Conversions

8. Facilities Expansion

9. Recycled Water

10. Brush Management

11. Rainwater Harvesting

12. Surface Water Rights

13. Balancing Storage

14. Alliance Regional Water Authority (ARWA) Expanded Carrizo-Wilcox Project (Phase 2)

15. ARWA DPR Project (Phase 3)

16. Canyon Regional Water Authority (CRWA) Expanded Brackish Carrizo-Wilcox Project

17. CRWA Siesta Project

18. CRWA Wells Ranch 3 (Phase 2) Project

19. Cibolo Valley Local Government Corporation (CVLGC) Carrizo Project

20. Guadalupe-Blanco River Authority (GBRA) Lower Basin New Appropriation

21. GBRA WaterSECURE

22. Medina County Regional Aquifer Storage and Recovery (ASR) Project

23. New Braunfels Utilities (NBU) ASR Project

24. NBU Trinity Well Field Expansion

25. San Antonio Water System (SAWS) Expanded Local Carrizo Project

26. SAWS Expanded Brackish Groundwater Project

27. SAWS Regional Wilcox Project

28. Schertz-Seguin Local Government Corporation (SSLGC) Expanded Brackish Wilcox Project

29. SSLGC Expanded Carrizo Project

30. Victoria ASR Project

31. Victoria Groundwater-Surface Water Exchange

32. Weather Modification

WMSs 1-13 are “umbrella” strategies. WMSs 14-32 are large WMSs for Major Water Providers or for regional projects.

Black & Veatch

40

Water Management Strategies (WMSs) Evaluated

1. Advanced Water Conservation

❖ 2. **Non-municipal Water Conservation**

3. Drought Management

4. Edwards Transfers

5. Fresh Groundwater Development

6. Brackish Groundwater Development

7. Groundwater Conversions

8. Facilities Expansion

9. Recycled Water

❖ 10. **Brush Management**

❖ 11. **Rainwater Harvesting**

12. Surface Water Rights

13. Balancing Storage

14. Alliance Regional Water Authority (ARWA) Expanded Carrizo-Wilcox Project (Phase 2)

15. ARWA DPR Project (Phase 3)

16. Canyon Regional Water Authority (CRWA) Expanded Brackish Carrizo-Wilcox Project

17. CRWA Siesta Project

18. CRWA Wells Ranch 3 (Phase 2) Project

19. Cibolo Valley Local Government Corporation (CVLGC) Carrizo Project

20. Guadalupe-Blanco River Authority (GBRA) Lower Basin New Appropriation

❖ 21. **GBRA WaterSECURE**

❖ 22. **Medina County Regional Aquifer Storage and Recovery (ASR) Project**

23. New Braunfels Utilities (NBU) ASR Project

24. NBU Trinity Well Field Expansion

25. San Antonio Water System (SAWS) Expanded Local Carrizo Project

26. SAWS Expanded Brackish Groundwater Project

❖ 27. **SAWS Regional Wilcox Project**

28. Schertz-Seguin Local Government Corporation (SSLGC) Expanded Brackish Wilcox Project

29. SSLGC Expanded Carrizo Project

30. Victoria ASR Project

31. Victoria Groundwater-Surface Water Exchange

❖ 32. **Weather Modification**

WMSs 1-13 are “umbrella” strategies. WMSs 14-32 are large WMSs for Major Water Providers or for regional projects.

Black & Veatch

41

Water Management Strategy Evaluations

All WMSs were evaluated:

- Uniformly
- Under drought of record conditions
- Consistent with TWDB requirements and Region L Guiding Principles
- Using quantifiable reporting methodology

The diagram illustrates the four main categories used for WMS Evaluations, each represented by a colored box connected to a central blue box labeled 'WMS Evaluations':

- Reliability** (Green box at the top)
- Net Quantity** (Red box on the left), which includes sub-factors: Water Loss, Firm Yield, and Unit.
- Environmental Factors** (Orange box on the right), which includes sub-factors: Agricultural Resources, T/E Species, Aquatic Resources, Vegetation, and Cultural Resources.
- Cost** (Purple box at the bottom), which includes sub-factors: Unit and Capital.

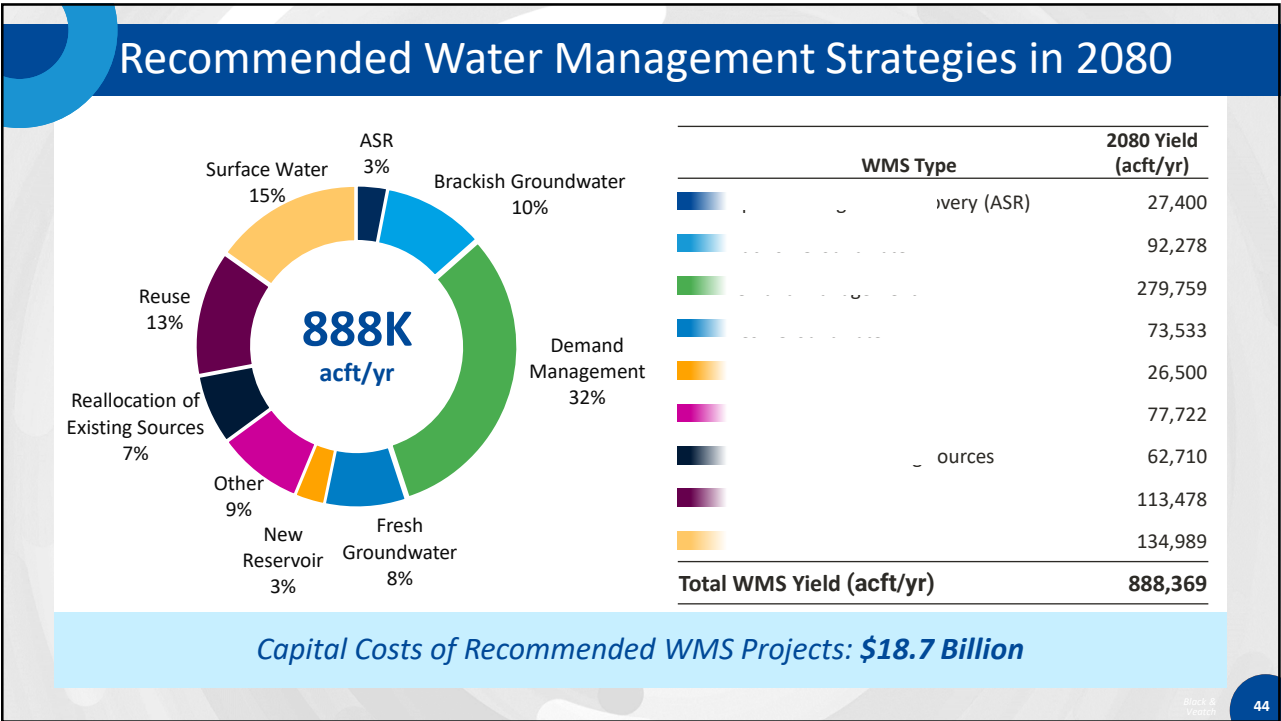
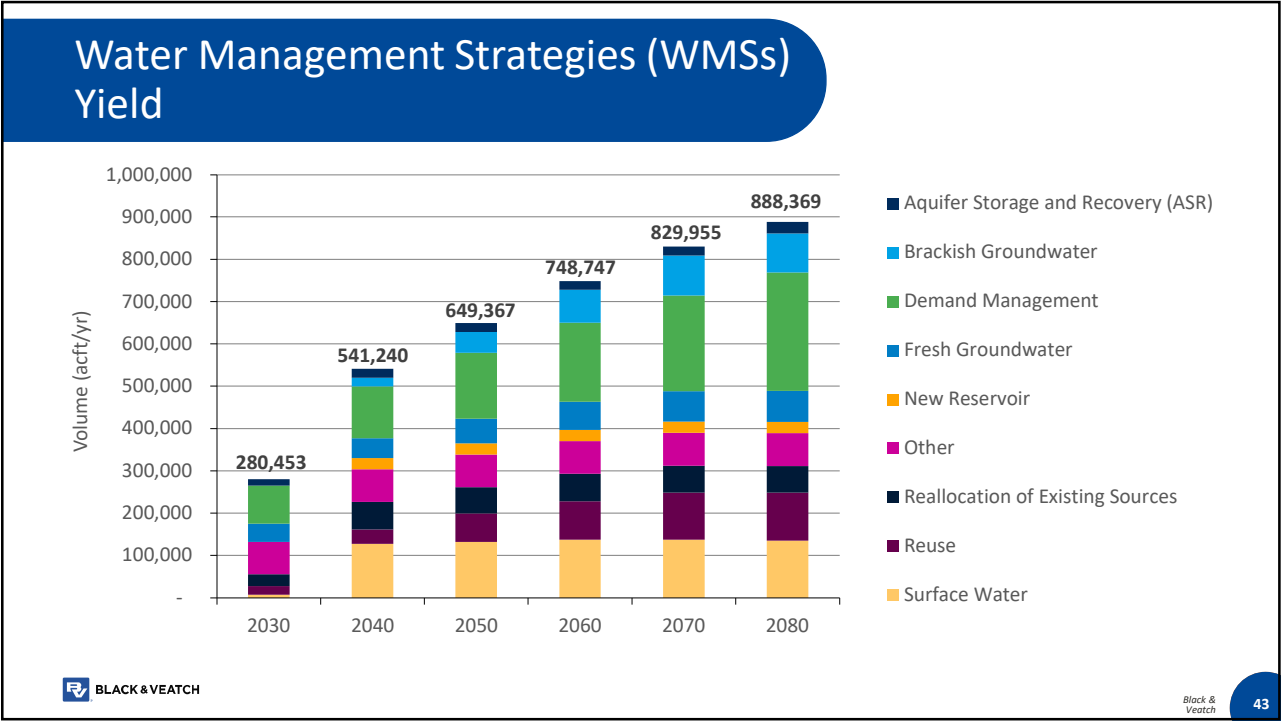
BLACK & VEATCH

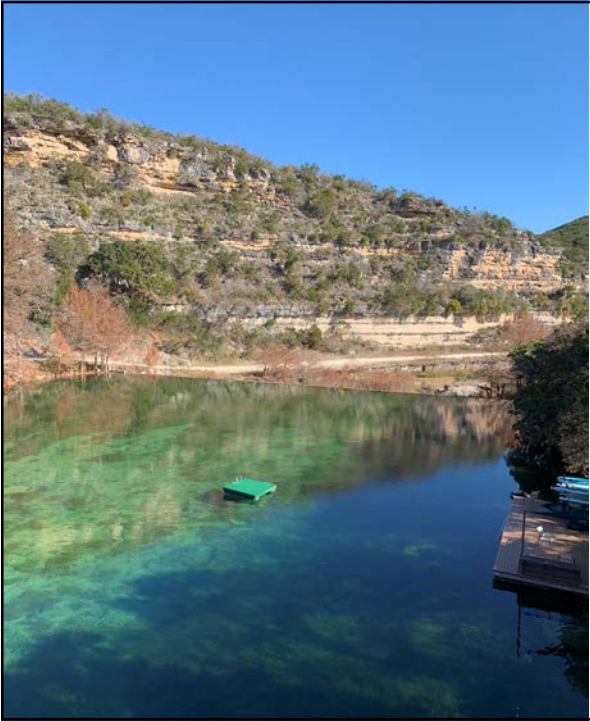
Black & Veatch

42

2026 South Central Texas (Region L) Regional Water Plan

18





CHAPTER 6-10

Includes the following information:

- 6. Impacts of the RWP and Consistency with Protection of Water Resources, Agricultural Resources, and Natural Resources
- 7. Drought Response Information, Activities, and Recommendations
- 8. Policy Recommendations and Unique Sites
- 9. Implementation and Comparison to the Previous Regional Water Plan
- 10. Adoption of Plan and Public Participation

For more information, refer to the Initially Prepared Plan at www.RegionLTexas.org

Black & Veatch

45

Next Steps

Virtual Informational Session on IPP

JULY

2

Public Comment Period Closes

JULY

20

RWPG considers and addresses comments

AUGUST

28

RWPG adopts FINAL PLAN


OCTOBER

2

RWPG Submits Final Plan to TWDB

OCTOBER

20



Written public comments accepted until 5 pm on July 20

BLACK & VEATCH

Black & Veatch

46

TOPIC

D

How to Submit Comments on the IPP

Black & Veatch

47

How to Submit Comments on the IPP

Comments will be accepted until 5 pm on July 20, 2025.
You may submit comments via mail or email

Via Mail

Caye Castillo
San Antonio River Authority
100 E Guenther St.
San Antonio, TX 78204

Via Email

Caye Castillo
ccastillo@sariverauthority.org

The Final 2026 Regional Water Plan will be submitted to the Texas Water Development Board by October 20, 2025, for adoption and integration into the 2027 State Water Plan

Black & Veatch

48

2026 South Central Texas (Region L)
Regional Water Plan

21