



2012 Water Management Plan

August 2, 2012

Region L Meeting

Charles Ahrens

Vice President / Water Resources and Conservation

2012 Water Management Plan

Planning Assumptions

- Per Capita Water Use
 - 143 gallons per capita per day (GPCD) in 2011, the hottest, driest year recorded in Texas
- Population Projection for Entire Service Area
 - 1.2% annual growth or ~20,000 people per year
- Current Supplies
 - As impacted by drought and the deepest restrictions
- Drought of Record
 - Replicate the worst case scenario from the 1950s

August 2, 2012

2012 Water Management Plan



Permitted Supplies and Demand

Supply Sources	2012 Unrestricted			Firm in a Drought of Record*		
	SAWS	DSP	Total	SAWS	DSP	Total
Edwards Aquifer	258,945	35,585	294,530	99,248	20,639	119,887
Trinity Aquifer	3,000	5,800	8,800	0	2,000	2,000
Carrizo Aquifer (Local)	6,400	1,000	7,400	6,400	1,000	7,400
Canyon Lake	8,500	-	8,500	8,500	-	8,500
Carrizo Aquifer (Regional)	17,200	2,800	20,000	17,200	2,800	20,000
Lake Dunlap	-	3,500	3,500	-	3,500	3,500
Medina	-	13,000	13,000	-	0	0
Subtotal	294,045	61,685	355,730	131,348	29,939	161,287
Aquifer Storage & Recovery	93,000	-	93,000	93,000	-	93,000
Total	387,045	61,685	448,730	224,348	29,939	254,287
2011 Demand						
All Sources	217,000	44,000	261,000	-	-	-

August 2, 2012

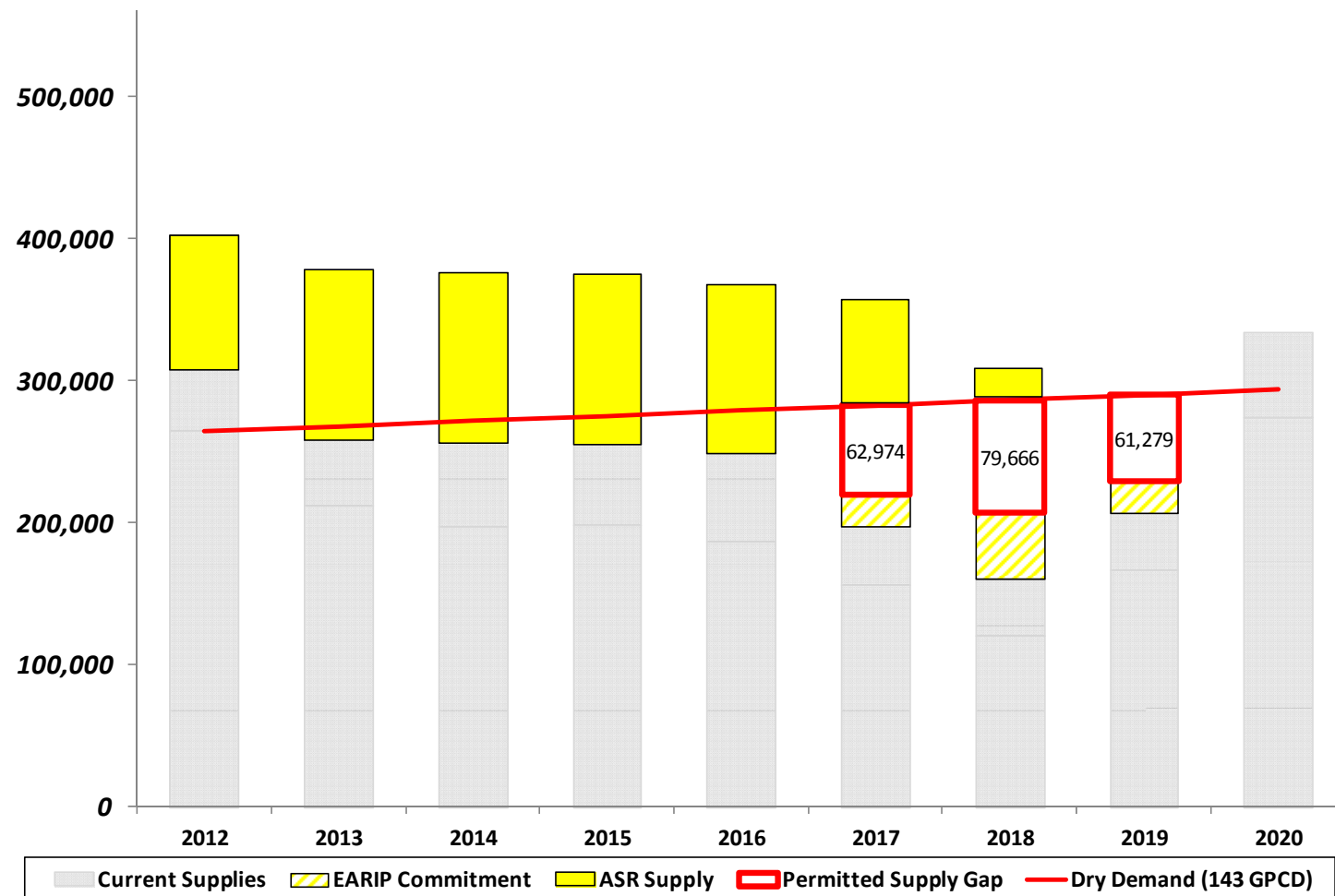
*Includes EARIP commitment

2012 Water Management Plan



The "Do Nothing" Scenario

Repeat of a Drought of Record 2012 - 2020



August 2, 2012

Worst case scenario with no additional supplies

2012 Water Management Plan



Filling the Supply Gaps

Strategic Elements

- Additional Edwards Supplies (underway)
- Brackish Groundwater Desalination (underway)
- Expanded Local Carrizo Aquifer (new element)
- Regional Water Supply Project (RFCSP) (underway)
- Demand Reductions (national leader)

August 2, 2012

2012 Water Management Plan



Water Management Strategies

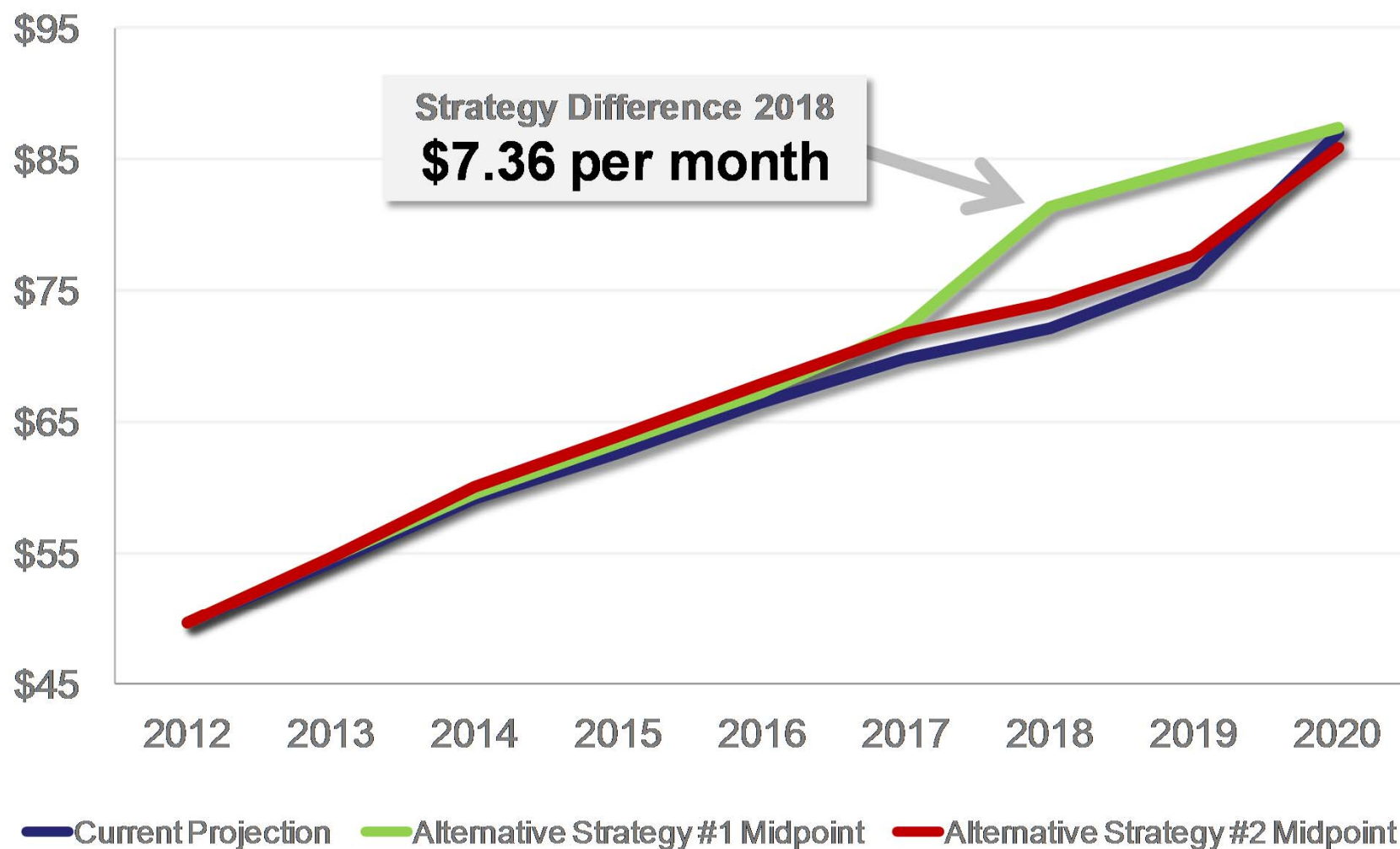
Filling the Supply Gaps

Planned Supply Source	Strategy #1	Strategy #2
Additional Edwards Rights	10,900 ac-ft/yr acquired in 2013	10,900 ac-ft/yr acquired in 2013
Brackish Desal Plant	11,200 ac-ft/yr on-line in 2016 22,400 ac-ft/yr in 2021 28,000 ac-ft/yr in 2026	22,400 ac-ft/yr on-line in 2016 28,000 ac-ft/yr in 2026
Expanded Local Carrizo	7,000 ac-ft/yr on-line in 2017 14,000 ac-ft/yr in 2022 21,000 ac-ft/yr in 2026	7,000 ac-ft/yr on-line in 2017 14,000 ac-ft/yr in 2022
Regional Water Supply Project	Up to 50,000 ac-ft/yr starting in 2018	20,000 ac-ft/yr starting in 2020
Demand Reduction		
- Water savings from programs to reduce dry year GPCD to 135	1,650 ac-ft/yr	1,650 ac-ft/yr
- Drought restrictions	No more than 1x per week	1x every other week + a surcharge

August 2, 2012

2012 Water Management Plan

Rate Implications



Residential Bill (7,788 gallons water / 6,178 gallons wastewater, ICL, Standard)

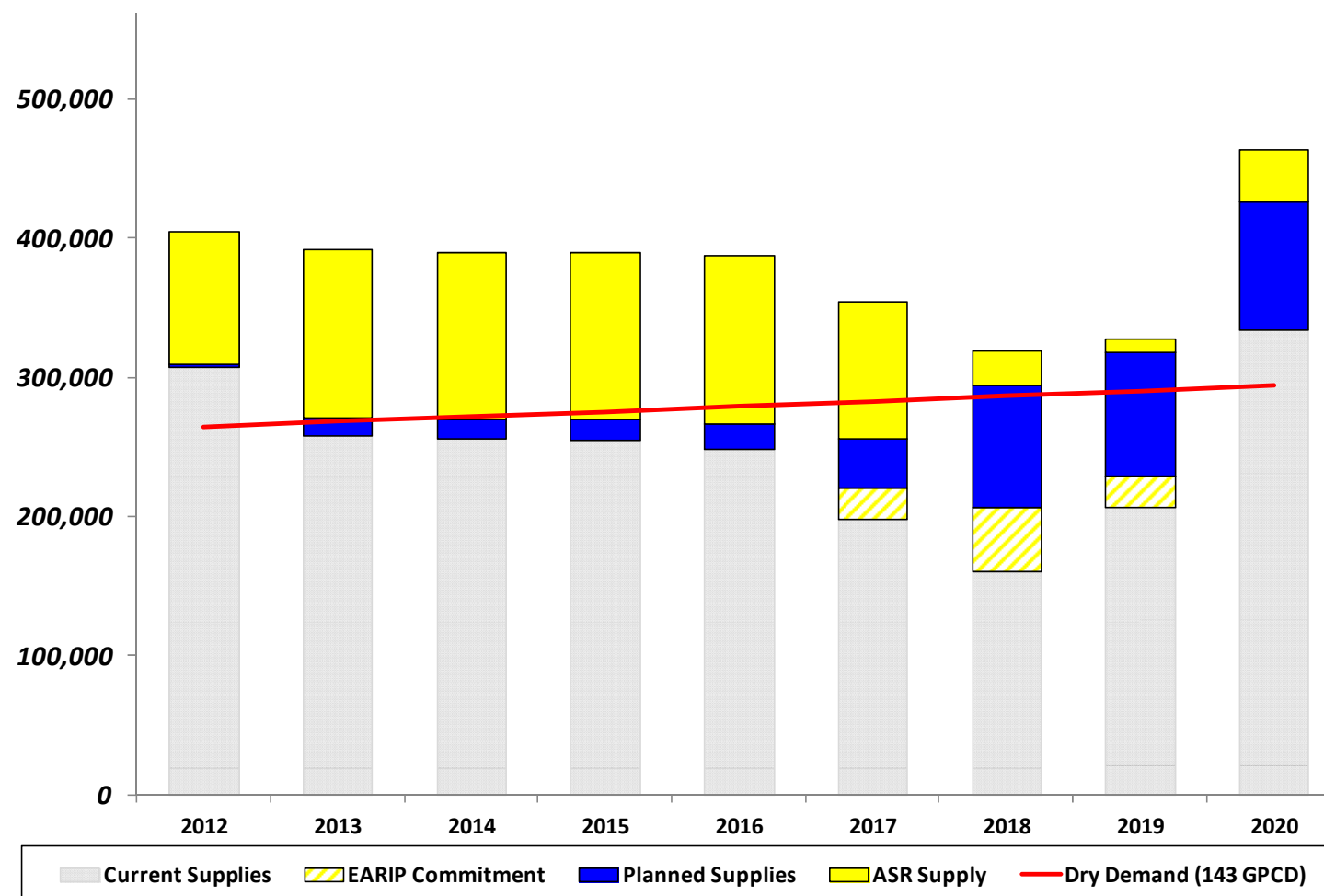
August 2, 2012

2012 Water Management Plan



Water Management Strategy #1

Drought of Record 2012 – 2020

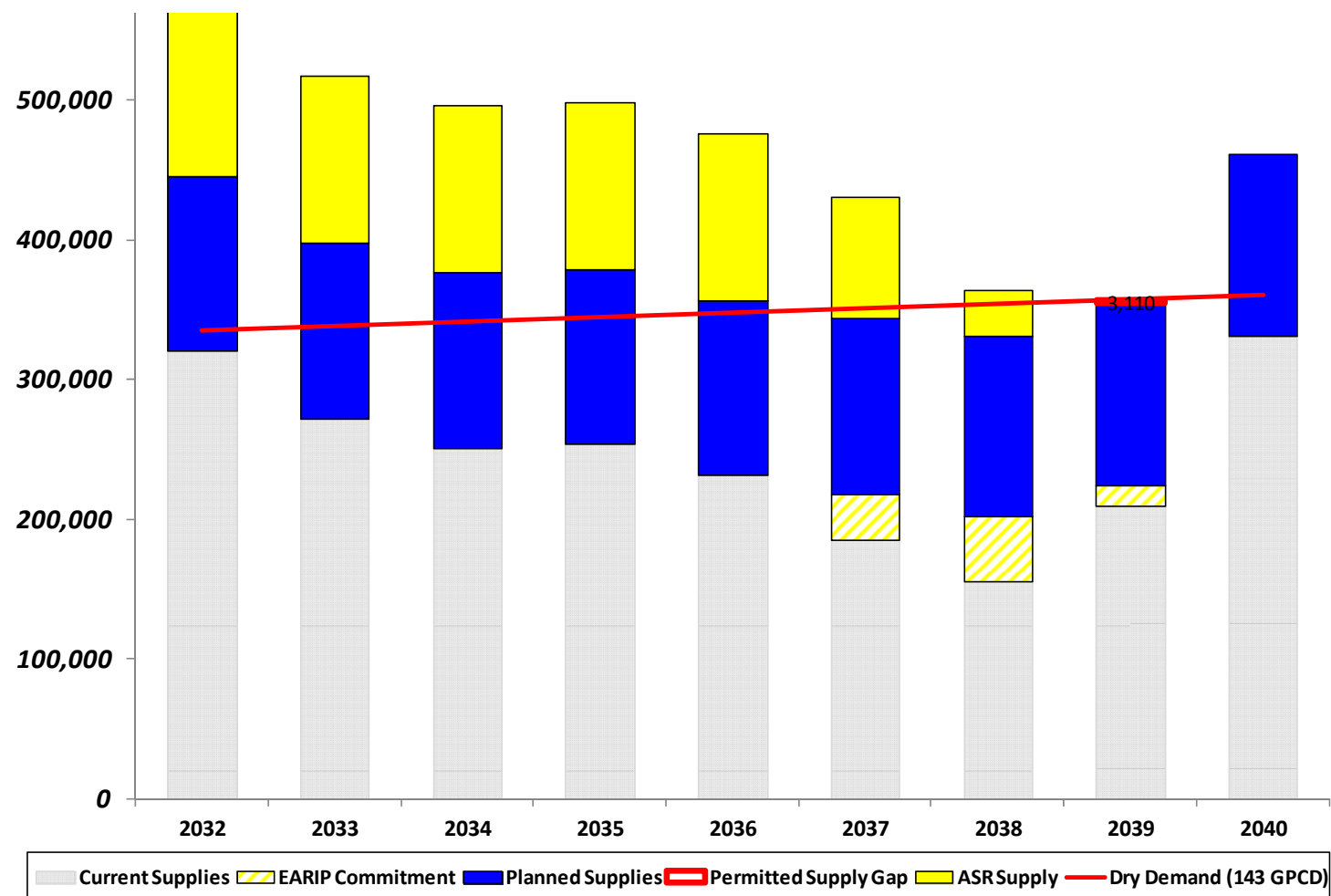


August 2, 2012

2012 Water Management Plan

Water Management Strategy #1

Drought of Record 2032 – 2040



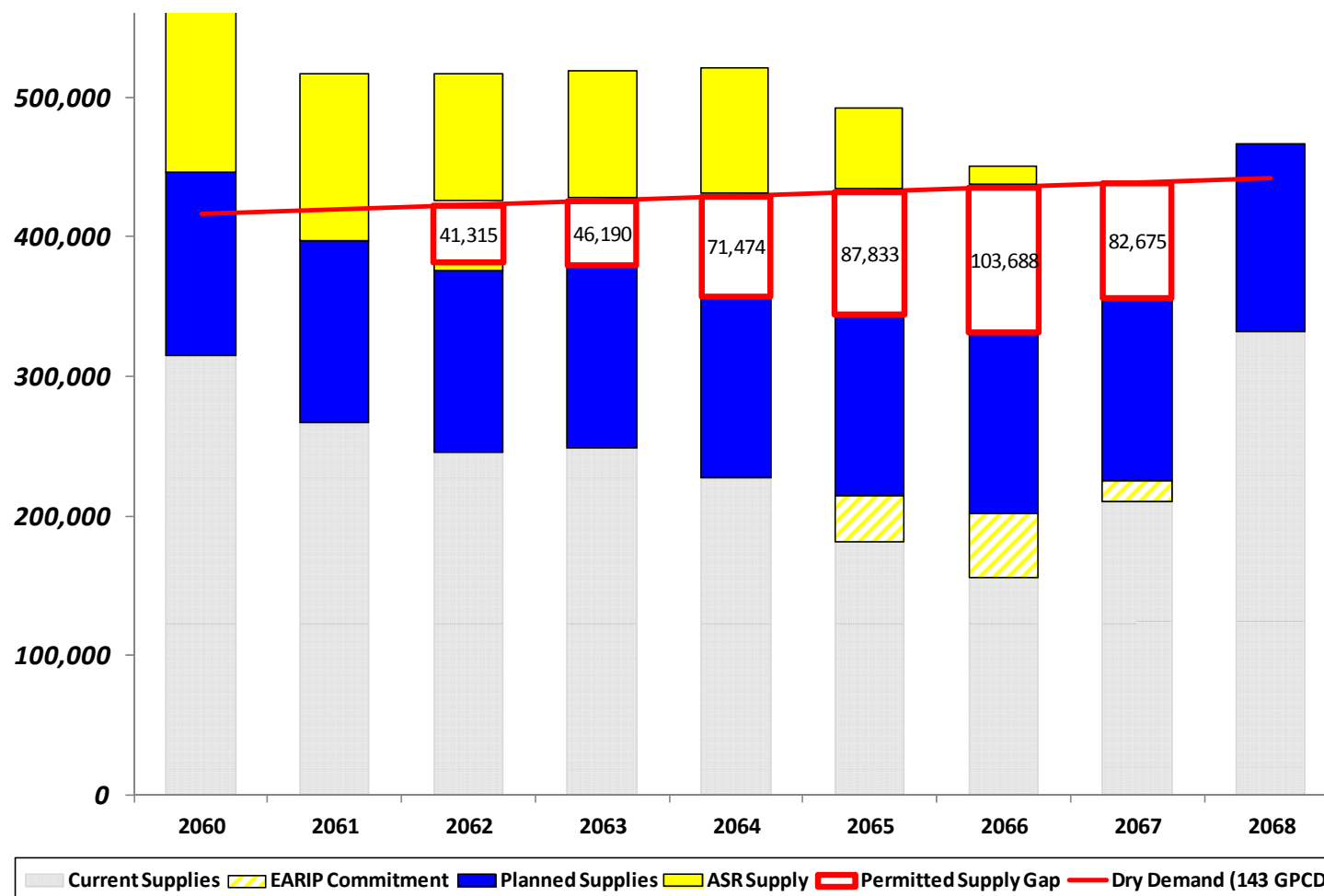
August 2, 2012

2012 Water Management Plan



Water Management Strategy #1

Drought of Record 2060 – 2068



August 2, 2012

2012 Water Management Plan

Conclusion

- Continue Track Record of Success
 - Progress since 2009 supplied San Antonio through 2011 with 1x per week outdoor watering
- Staff Recommends Water Management Strategy #1
 - Large Regional Water Supply Project(s) with higher rate requirements by 2018
 - Continued focus on conservation while avoiding strict restrictions through 2039

August 2, 2012

2012 Water Management Plan



Outreach

- To Date:
 - SAWS Policy and Planning Meetings
 - Greater Chamber Public Affairs Water Committee
 - CEO one-on-one with City Council Members
 - Citizens' Advisory Panel
 - Community Conservation Committee
 - District 10 Alliance

August 2, 2012

2012 Water Management Plan



Outreach

- Near Term Planned:
 - Local and regional Chambers of Commerce
 - BexarMet Integration Advisory Committee
 - Trinity Glen Rose Groundwater Conservation District
 - Trade and Civic Organizations – SA Restaurant Assoc, SAMA, COPS/Metro, Real Estate Council, etc.
 - Regional Neighbors
 - Customer Survey

August 2, 2012

2012 Water Management Plan





2012 Water Management Plan

August 2, 2012

Region L Meeting

Charles Ahrens

Vice President / Water Resources and Conservation