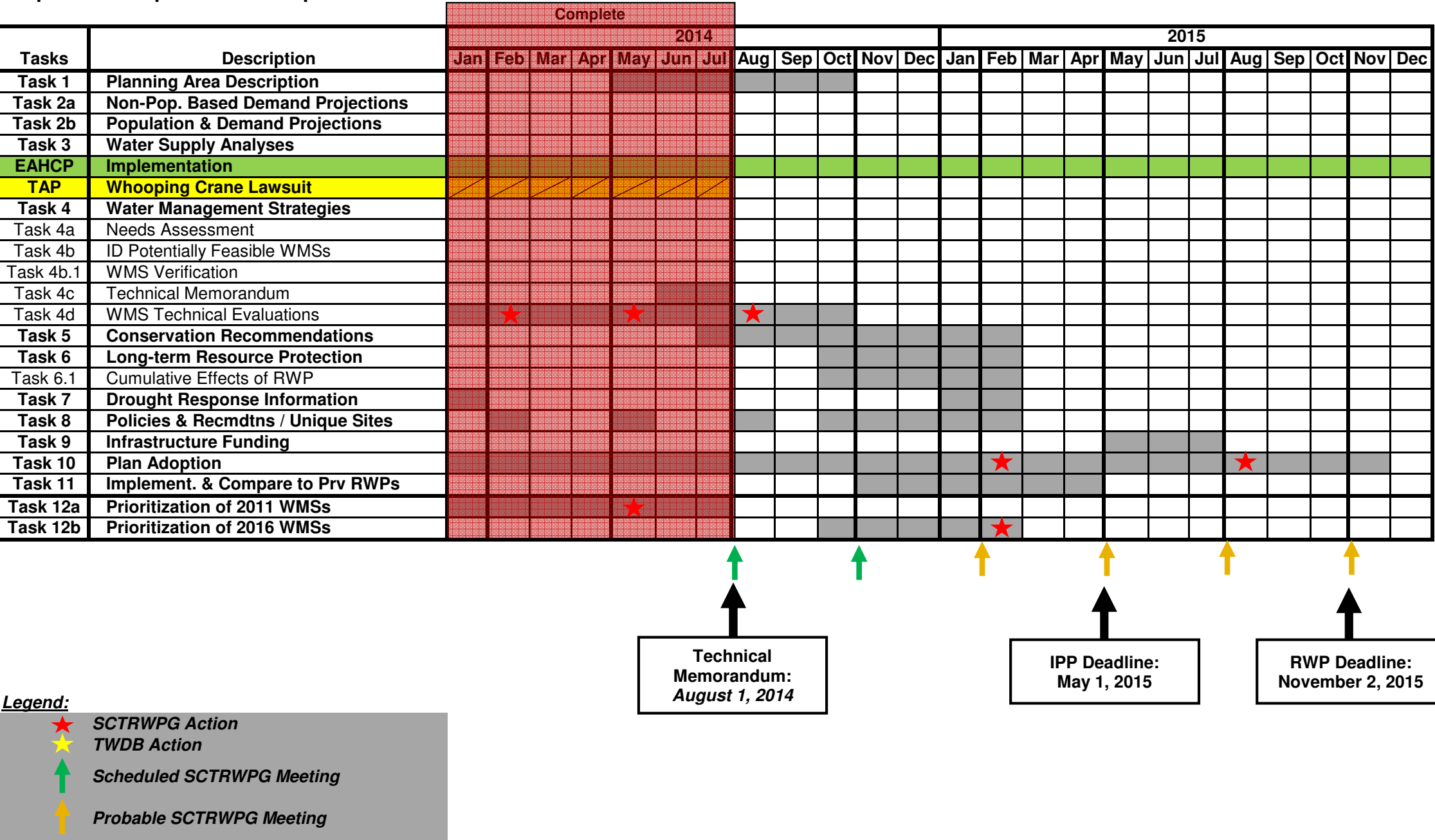


Senate Bill 1  
South Central Texas RWPG  
Staff Workgroup Meeting  
July 24, 2014 at 9:00 am

- 1) Update of Regional Water Planning Project Prioritization
- 2) Status of Technical Consultants Work and Schedule
  - a. Review schedule and budget
  - b. Review of Potential Issues for the 2016 SCTRWP
  - c. Review of draft scopes and budgets for WMS:
    - i. SAWS Seawater Desalination
    - ii. Victoria County Stream-Electric
  - d. Review list of potentially feasible water management strategies for authorization to begin draft scopes of work and budget to present at August meeting (if any)
  - e. Presentation and review of technical evaluations of WMSs for presentation at August Planning Group Meeting
- 3) Discussion of Submittal of Technical Memorandum on August 1, 2014
- 4) Review of Proposed Amendments to the 2011 SCTRWP
- 5) Review Draft Agenda for the August 7<sup>th</sup>, 2014 Planning Group Meeting

2016 South Central Texas Regional Water Plan  
Proposed Workplan for Development



# Potential Issues For The 2016 SCTRWP

August 7, 2014

- 1) Carrizo Aquifer Workgroup (Status: Recommendation Approved)
  - a) Multiple Potentially Feasible Projects Exceed MAG
  - b) TWDB will not allow for over-allocation in the 2016 RWP
- 2) Importing Groundwater from Other Regions (Status: Technical Consultants have initiated discussions regarding Hays County-Forestar Project)
- 3) Meeting Needs of Formosa (Status: Con Mims has discussed with LNRA)
  - a) Coordination with Regions P and N
- 4) Implementation of TCEQ Estuary Environmental Flow Standards (Status: No documentation from TCEQ; Proceed based on comments with TCEQ)
- 5) Population and/or Water Demand Projections Revisions (Status: Finished)
- 6) Eagle-Ford Shale Demands – Direct, Indirect, and Induced (Status: Finished)
- 7) Whooping Crane Litigation (Status: District Court Decision Reversed by Fifth Circuit Court of Appeals – 6/30/14)
- 8) Meeting Steam-Electric Needs in Victoria County (Status: GBRA to meet the Need; WMS for your consideration)
- 9) Inter-Regional Coordination (e.g. SAWS Competitive Sealed Proposals) (Status: To Be Evaluated for Regional Water Plan)
- 10) Legislation (Status: Legislative Session Ended; Responding to legislation adopted in 2013; New Session begins January 2015)

**TASK 4D**  
**WATER MANAGEMENT STRATEGIES**  
**Scope and Budget #6**

**Perform Technical Evaluations including Cost Estimates**

Perform technical evaluations, including cost estimates and documentation, of the following water management strategies (WMS) to be consistent with current projections of water supply needs and facilities planning pursuant to TWDB rules and guidance. Work effort involves coordination with sponsoring water user group(s), wholesale water provider(s), and/or other resource agencies regarding projected needs, planned facilities, costs of water supply, endangered or threatened species, etc. Work effort includes cost estimates and supporting documentation to reflect the September 2013 cost basis for the 2016 regional water plans pursuant to TWDB guidance.

**SAWS Seawater Desalination**

**\$10,800**

Update technical evaluations for the Seawater Desalination water management strategy to be consistent with current projections of water supply needs and facilities planning pursuant to TWDB rules and guidance. Coordinate with the San Antonio Water System (SAWS) in order to be consistent with their Water Supply Plan regarding this WMS with technical focus on available information regarding water treatment technology and plant location, off-shore brine disposal, pipeline route, and transmission capacity. Estimate cost of project and document in the technical evaluation.

**Victoria County Steam-Electric**

**\$8,800**

Update technical evaluations for the Victoria County Steam-Electric water management strategy (formerly the GBRA-Exelon Project) to be consistent with current projections of water supply needs and facilities planning pursuant to TWDB rules and guidance. Work effort involves coordination with GBRA and others regarding changed conditions in terms of projected needs, planned facilities, costs of water supply, endangered or threatened species, etc. Update cost estimate of project focusing on available information from the 2011 Region L Water Plan and document in the technical evaluation.

**Total = \$19,600**

**Previously Authorized (May, Aug, & Nov 2013, and Feb & May 2014) = \$448,650**

**Grand Total = \$468,250**

**Total Task 4D Budget = \$509,904**

**Budget Left To Be Allocated = \$41,654**

<b>Previously Authorized</b>	<b><u>Amount</u></b>
Edwards Aquifer Habitat Conservation Plan (EA HCP)	\$5,800
Water Conservation	\$8,950
Drought Management	\$8,950
Recycled Water Program Expansion & Amendment	\$6,700
Local Groundwater	\$19,900
Surface Water Rights	\$4,100
Facilities Expansions	\$4,700
Balancing Storage (ASR and/or Surface)	\$4,100
Wells Ranch – Phase 2 (CRWA and Others)	\$12,200
Brackish Wilcox for CRWA (Formerly Brackish Wilcox for the RWA)	\$12,200
Hays/Caldwell PUA – Phases 1 & 2 (San Marcos, Buda, Kyle, CRWA)	\$21,600
CRWA Siesta Project (CRWA)	\$14,500
Brackish Wilcox for SAWS	\$17,400
Expanded Local Carrizo – Bexar County (SAWS)	\$14,000
Brackish-Wilcox, Gonzales County (SSLGC)	\$13,250
Texas Water Alliance Carrizo Well Field, Gonzales County (TWA)	\$18,100
Carrizo-Wilcox Aquifer, Wilson County (Cibolo Valley Local Government Corporation)	\$18,600
GBRA Mid-Basin Project and Alternatives (GBRA)	\$10,900
GBRA Lower Basin Off-Channel Reservoir (GBRA)	\$18,900
GBRA Lower Basin New Appropriation (GBRA)	\$19,100
Water Resources Integration Pipeline (SAWS)	\$5,400
Advanced Meter Infrastructure (SAWS)	\$3,000
Integrated Water-Power Project (GBRA)	\$11,400
Luling ASR (GBRA)	\$13,500
New Braunfels ASR Project (NBU)	\$12,200
New Braunfels Trinity Well Field (NBU)	\$10,000
TWA Trinity Well Field/Western Comal Project/Upper Cibolo Valley Project	\$10,000
Edwards Transfers	\$14,400
Purchase from WWP	\$15,000
Expansion Carrizo-Wilcox Aquifer, Guadalupe Co (SSLGC)	\$10,900
Lavaca River Off-Channel Reservoir	\$7,900
Brackish Wilcox Groundwater for SS WSC	\$10,000
Carrizo Transfers	\$3,500
Brush Management	\$10,600
Hays County-Forestar Water	\$11,500
Regional Brackish Wilcox Project – Alternative WMS (SAWS)	\$7,800
Carrizo/Buda/Austin Chalk/Leona & Regional ASR (City of Uvalde)	\$9,500
Vista Ridge Project (SAWS)	\$10,200
Storage Above Canyon Reservoir (ASR)	\$9,200
Hays/Caldwell PUA – TWA Joint Project	<u>\$8,700</u>
<b>Total for Previously Authorized</b>	<b>\$448,650</b>